
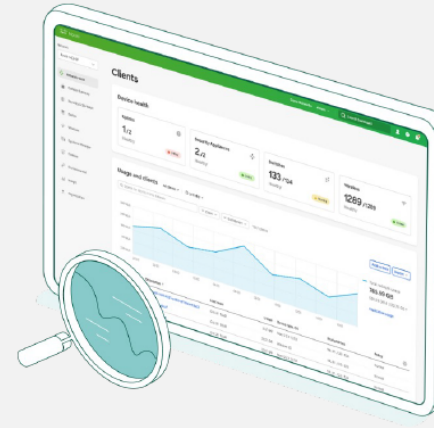


Q&A: Please read the
speaker notes in this first
slide 

QUICK START

Getting Started with Cloud Monitoring for Catalyst

Follow this simple three-step process to create a free Meraki dashboard account and onboard your devices.



Start your journey to cloud management today

1

Gather device information

To get started, you'll need your Catalyst device credentials (SSH username and password, device IP addresses and ports) handy.

2

Set up the Meraki dashboard

Next, set up or [log into your Meraki dashboard](#) account. Enable and grab your API key from **Organization > Settings > API access**.

3

Onboard your devices

From **Organization > Inventory**, download and run the Catalyst onboarding app.

That's it! After the onboarding process is complete, head to the switches section of the dashboard to see topology, clients, traffic, and more.

Supported Catalyst hardware

Cloud monitoring through the Meraki dashboard is supported on the following Catalyst hardware:

- Catalyst 9200/L series
- Catalyst 9300/L/X series
- Catalyst 9500 series
- Running IOS-XE versions 17.3.x to 17.8

Looking for more? Check out the full [Onboarding Guide](#).

A cloud-based platform with real management experience

Once your devices are registered with the Meraki dashboard, here are six simple ways to start your cloud-monitoring journey.



View network topology

In the Network-wide tab, check out **Monitor > Topology** to see the map of all your connected devices.



Track clients and traffic

Speaking of traffic, get detailed telemetry on every client connected to your network.



Monitor switch status

The list of switches not only shows every device, but also shows critical status details in a single view.



Troubleshoot from miles away

Connection trouble? Cycle and ping the port from anywhere on the planet.



Inspect port details

Click into any Catalyst switch and see information about real-time port status, stacks, and config.



Don't worry, get "appy"

See any applications running on the network and track down the owner, fast.

Want to learn more? Join the Meraki Community today

Find answers, ask questions, and connect with a community of cloud-management aficionados from around the world.

[Sign in](#) with your Cisco account and accelerate your journey to the cloud.



[Learn more at meraki.cisco.com](https://meraki.cisco.com)



The bridge to possible

Cloud Monitoring and Management for Catalyst

Grant Shirk, Head of Product Marketing, Cisco Meraki
09 June 2022

It's a brave new world.

47%

Of employees would likely look for another job if their employer didn't offer hybrid work options.¹

13%

Increase in employee productivity when working from home at least a few days/month.²

200%

Growth in mobile devices accessing meetings.¹

2.4x

Increase in malicious remote access attempts.³

The Challenge: Everything is Job #1



Job #1: Accelerate Productivity

Make it easy for hybrid workers to get work done, anywhere, any time.



Job #1: Resiliency and Scale

Consistent, predictable operations at global scales



Job #1: Better Experiences

Keep employees and customers engaged, secure, and connected



Job #1: Cost and Sustainability

Work smarter, not harder, to reduce complexity, cost, and eco impact

Business works best in the cloud

Connect from anywhere

Automate smart, secure, and
sustainable workspaces

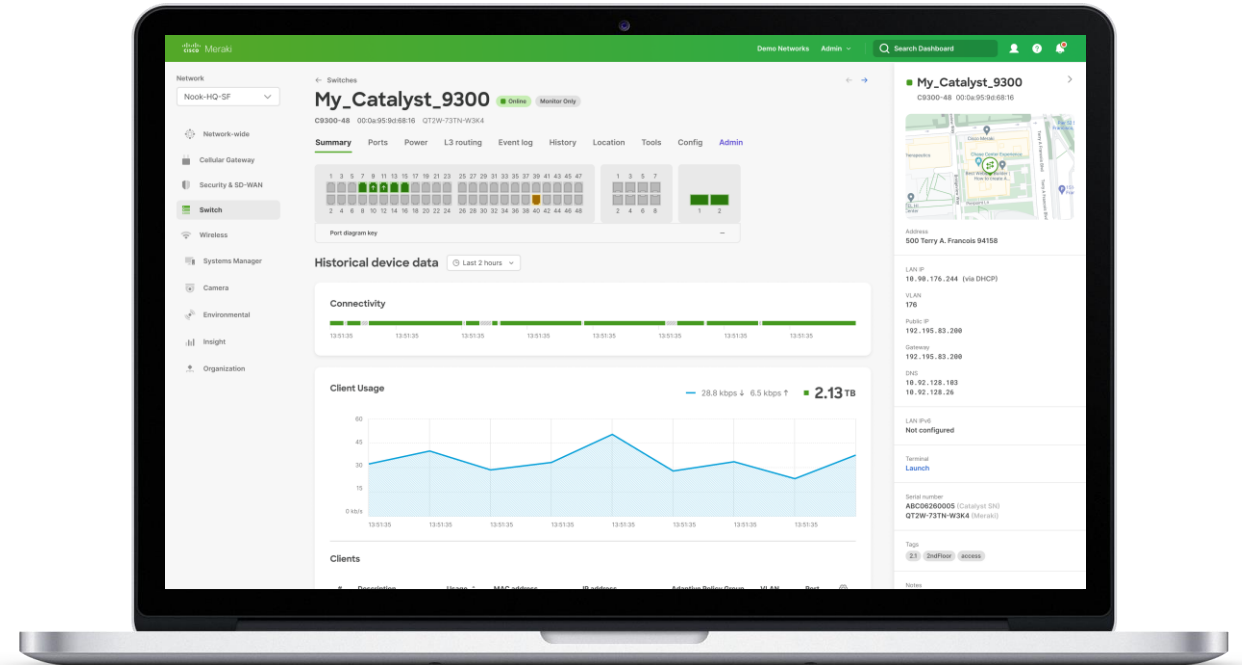
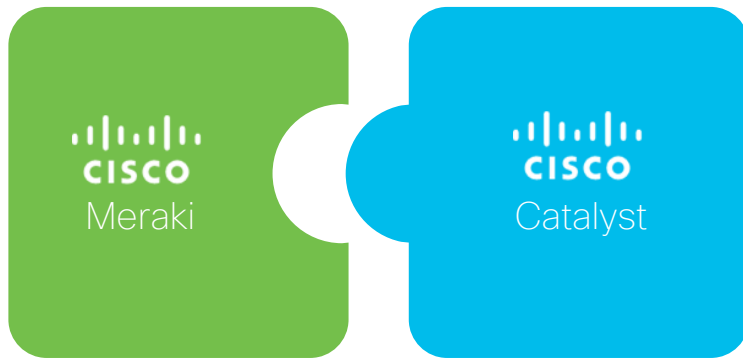
Adapt to evolving needs and
emerging disruptions

Reduce operational complexity
and cost at global scale

Cloud Management for Catalyst

#1 in cloud
management

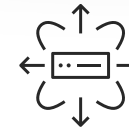
#1 in networking
hardware



Cloud Platform



Wireless



Switches



Ecosystem

Cloud monitoring use cases



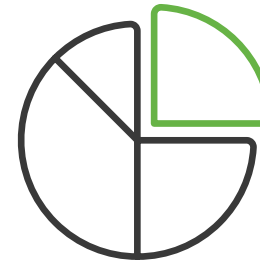
Centralized view of
the entire network



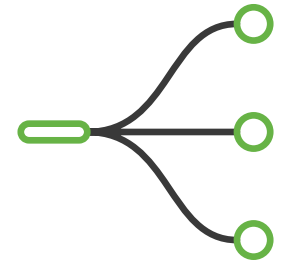
Real-time status of
switch health



Remote
monitoring



Traffic
visibility



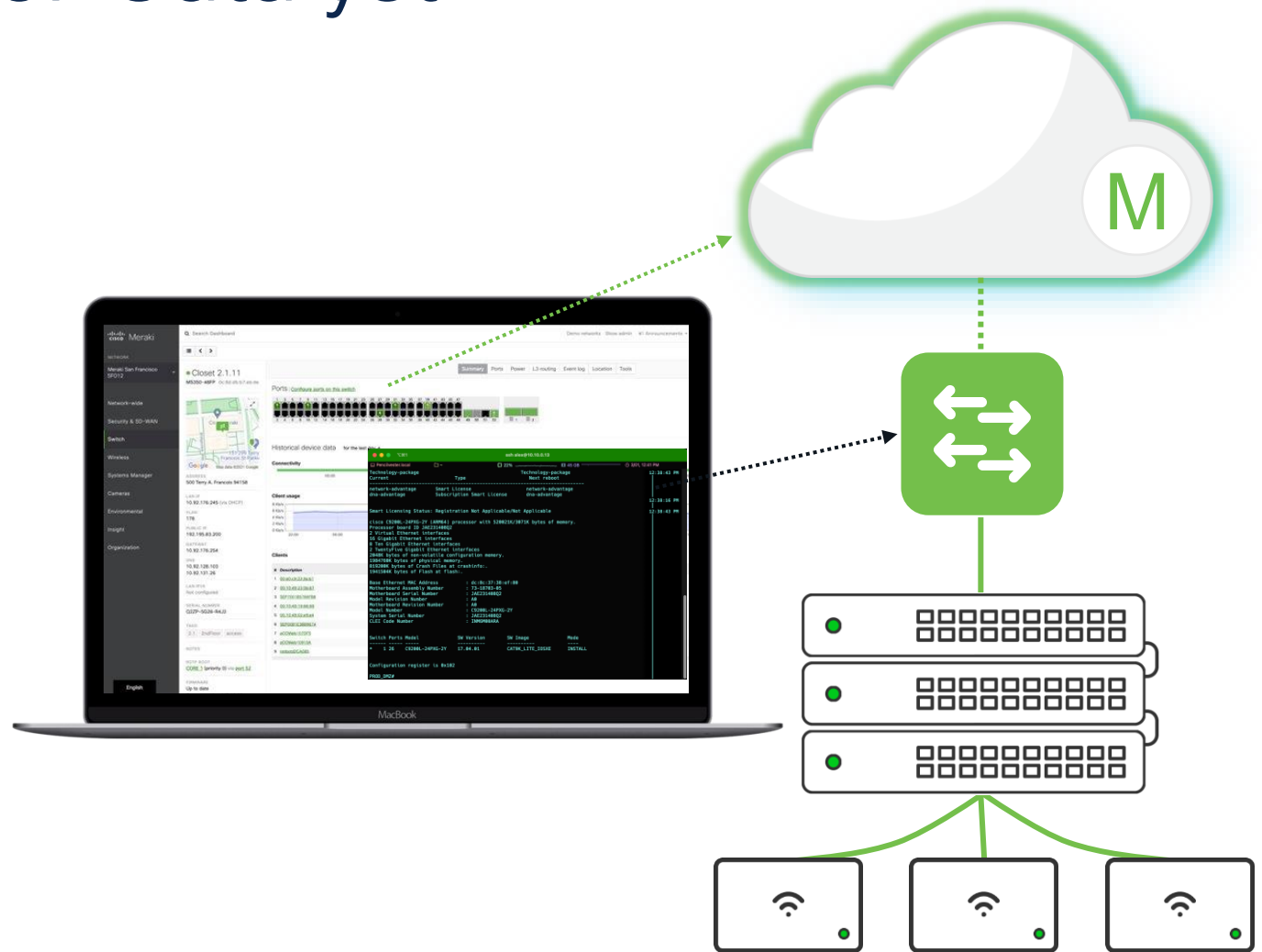
Network
topology

Cloud Monitoring for Catalyst

Unified view of Cisco network infrastructure

Device health and troubleshooting

Network client and traffic information

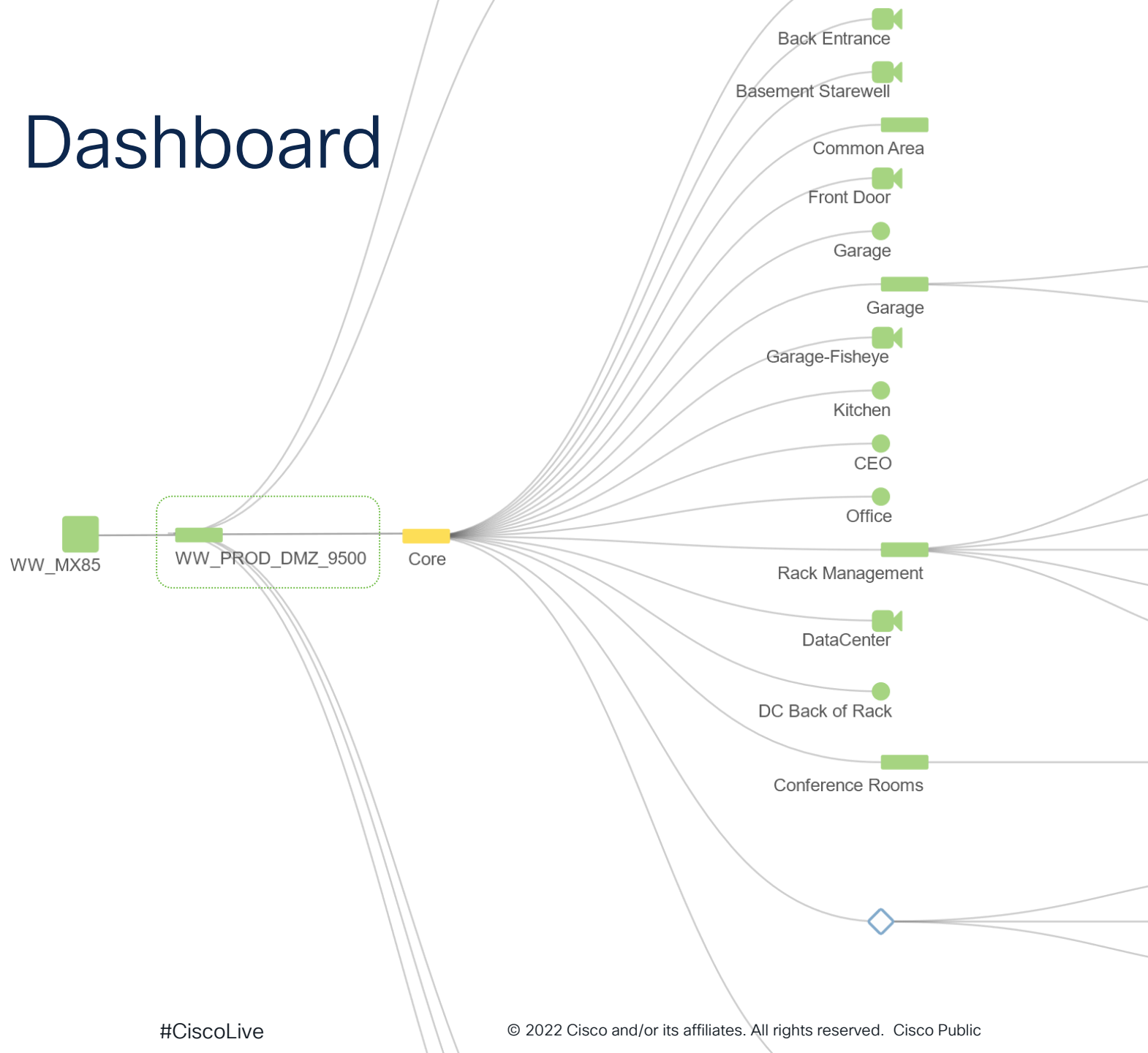


One Network, One Dashboard

Consolidated
Device Inventory

Centralized monitoring of
IOS and Meraki devices

Unified topology view

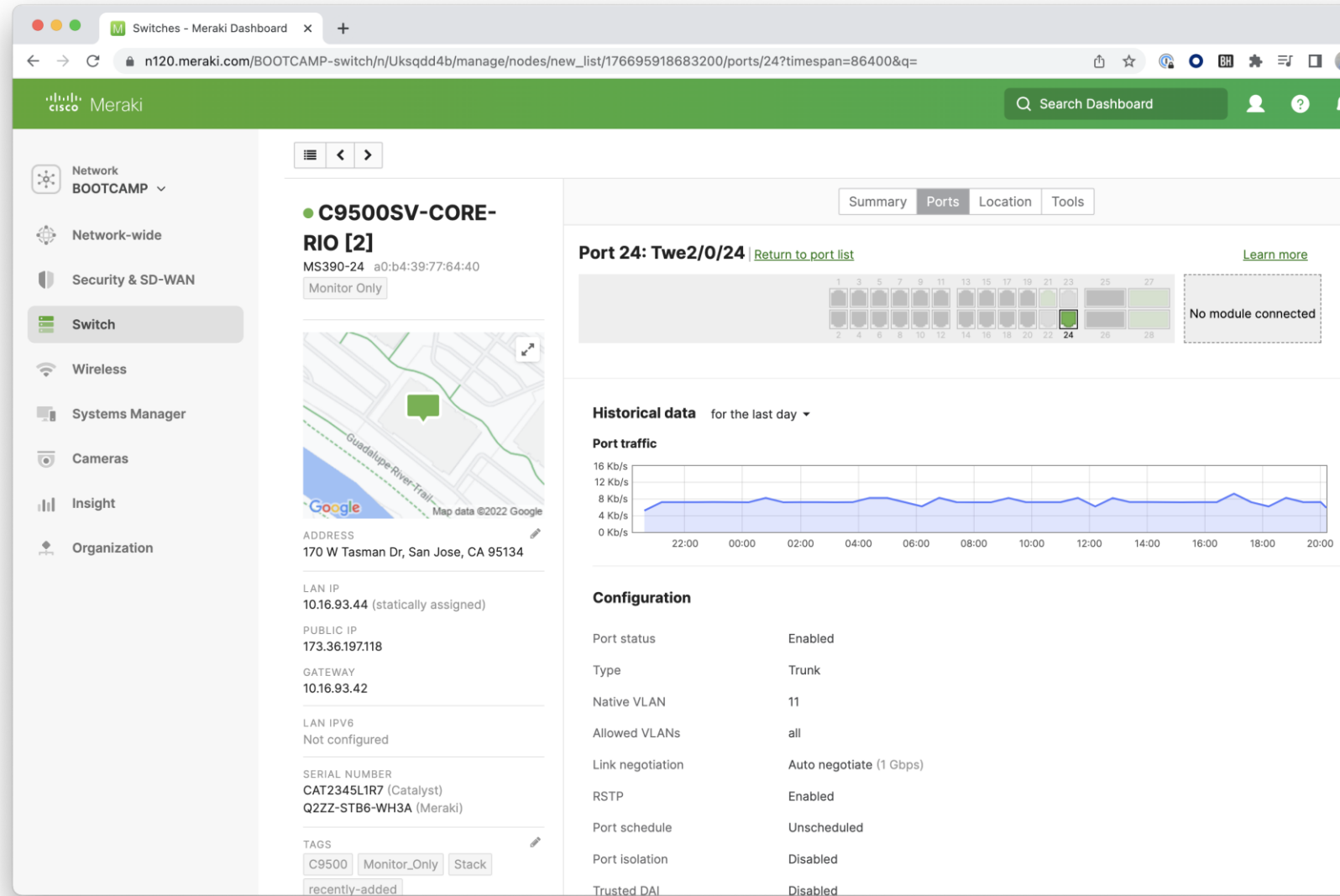


Keep Your Network Healthy

In-Dashboard alerts for switch or port issues

Port-level packet and error counters

Remote troubleshooting and diagnostics tools

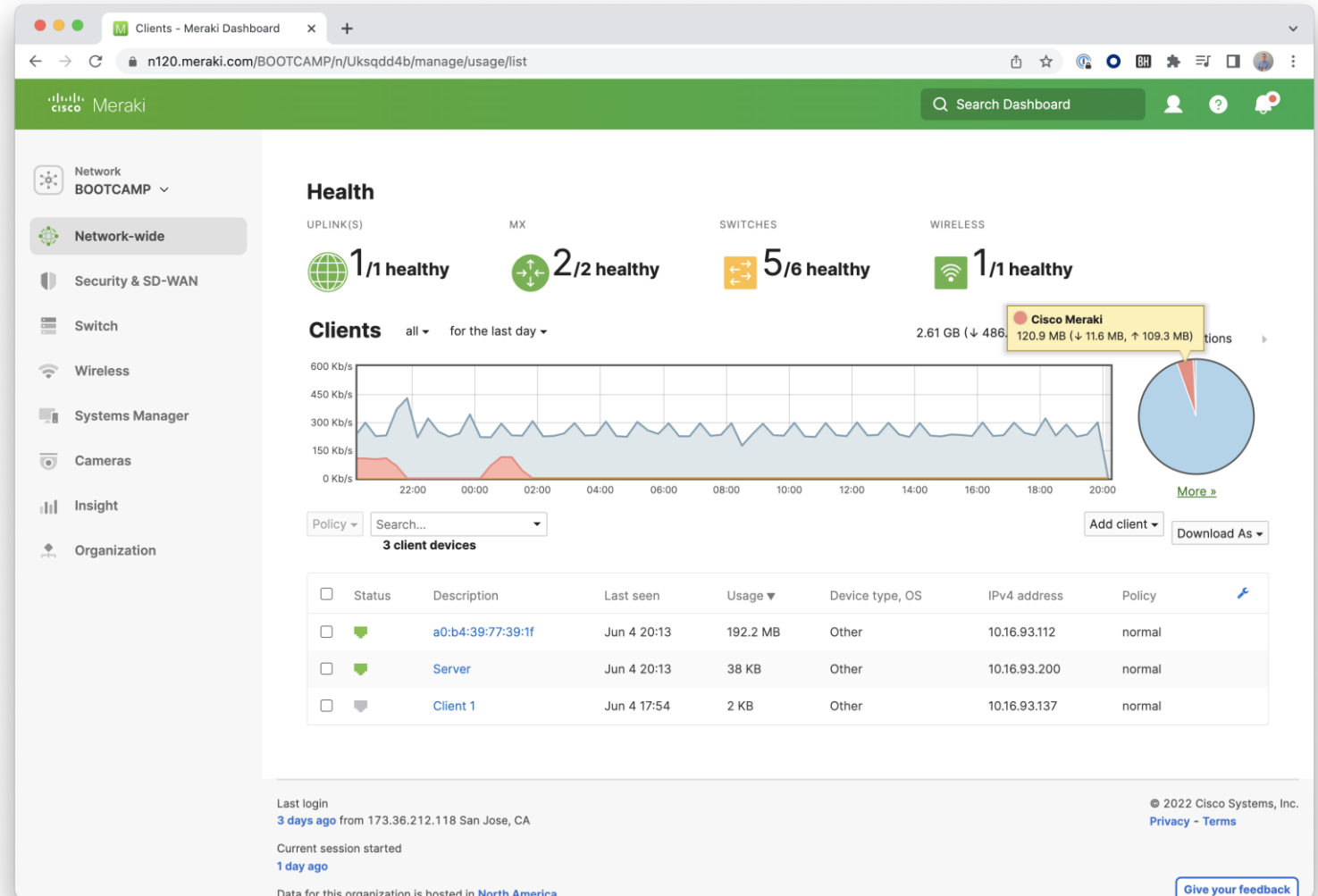


Know What's Happening With Your Users

See connected devices
across your network

Detailed network usage
and traffic statistics

Application visibility
into network traffic



Supported Platforms and Software



Models

Catalyst
9200/L
9300/L/X
9500

Firmware

IOS-XE 17.3+

Licensing

DNA Advantage
DNA Essentials*

* DNA Essentials will not provide application or usage data

Step two:

Cloud management

Full cloud management for wireless LAN
Combine cloud-managed switches and new CW APs

Zero-touch, fully remote onboarding
Simple to convert, simple to manage, simple to scale

Scalable segmentation and software updates
Delivering a confident, predictable path to cloud management

Cisco Catalyst 916x Wi-Fi 6E Access Points



CW9162



CW9164



CW9166

- Powering the hybrid workplace
- Connecting safer, smarter spaces
- Intelligent and optimized for a wired-like experience
- Manageable via Meraki dashboard or Catalyst 9800 Series Wireless Controllers

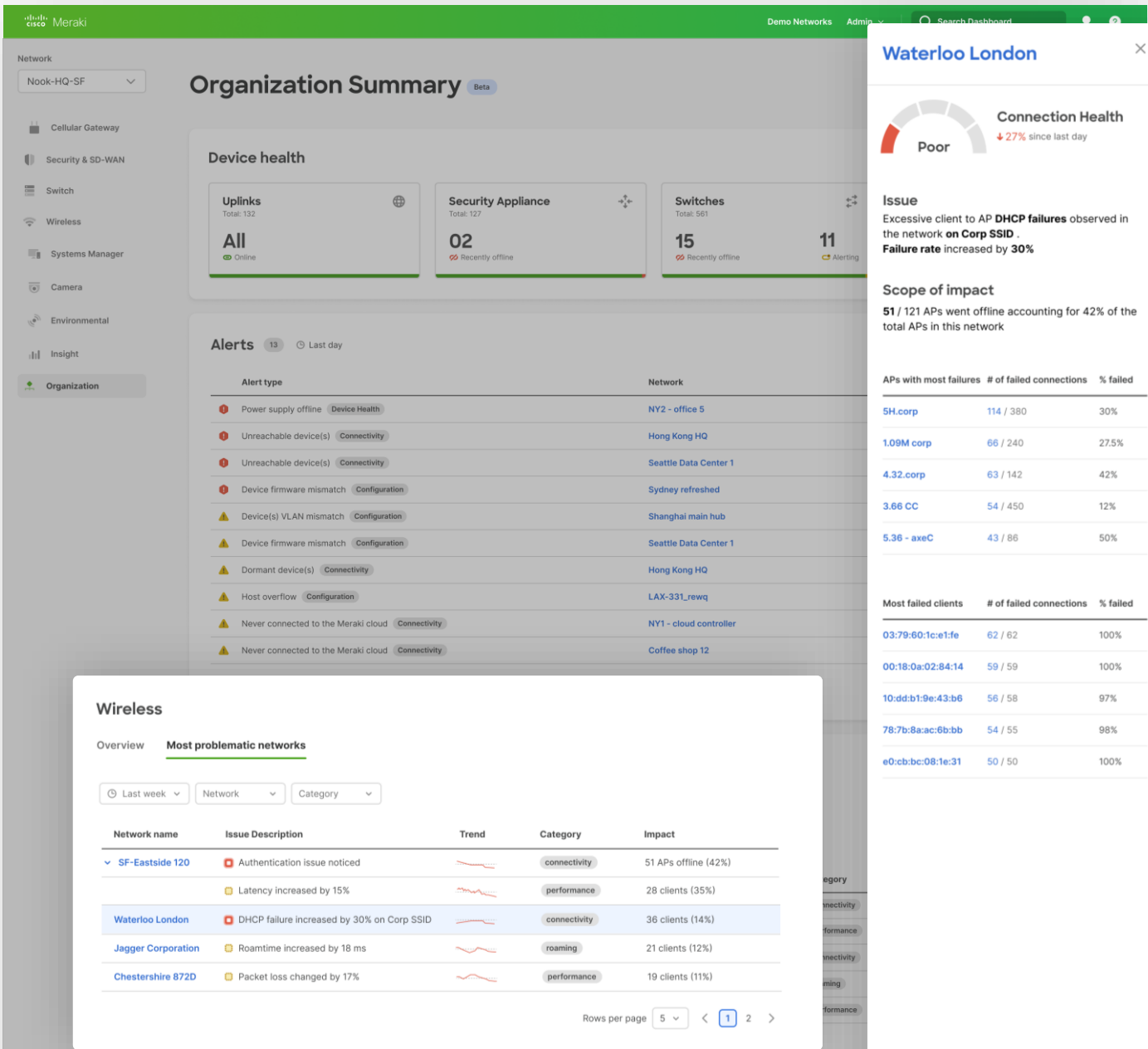
Simplicity | Ease of use | Best-in-class hardware

A cloud platform with real management experience

See connected devices across your network

Detailed network usage and traffic statistics

Application visibility into network traffic





Cloud security

**Connect.
Inspect.
Protect.**

Enforce

security policy on any device, from company-owned to BYOD.

Monitor

every single uplink—including cellular and home-user—from a single view.

View

performance of critical applications across your LAN, WAN, and app server, wherever it is.

Secure

against threats using ISE, Cisco Talos, advanced layer-7 firewall, Cisco AMP, DLP, and more.

Seeing is believing...

Your turn: Get started with Cloud Monitoring

1

Collect device credentials

To get started, you'll need your Catalyst device credentials (SSH Username and Password, Device IP addresses and ports) handy.

2

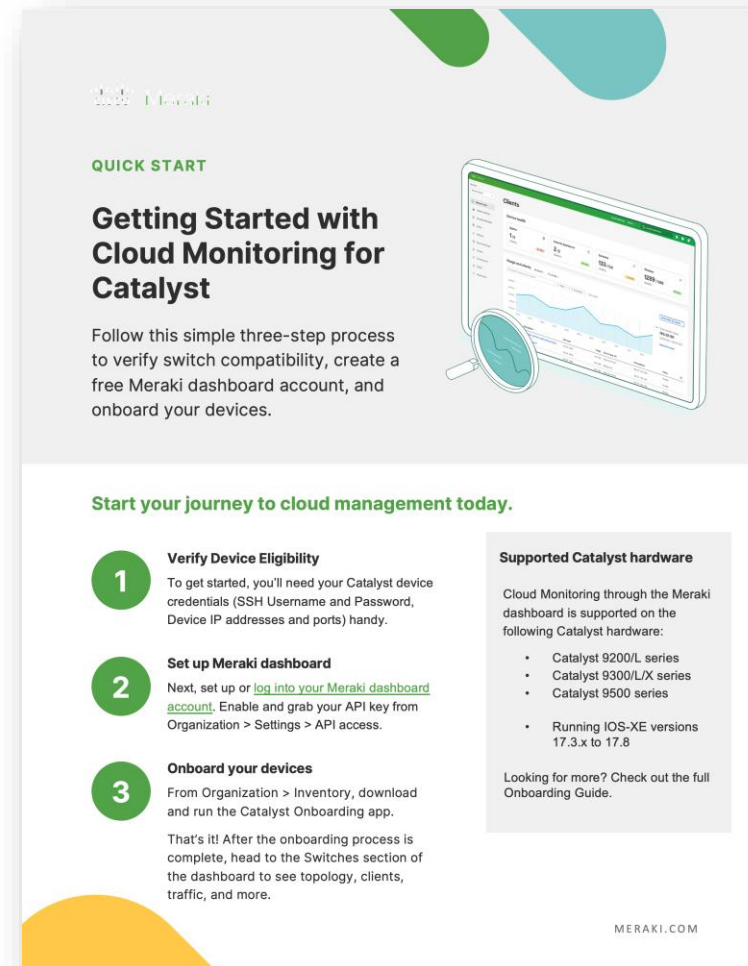
Set up Meraki dashboard

Next, set up or [log into your Meraki dashboard account](#). Enable and grab your API key from Organization > Settings > API access.

3

Onboard your devices

From Organization > Inventory, download and run the Catalyst Onboarding app.




The image shows a document titled "Getting Started with Cloud Monitoring for Catalyst" from Meraki. It includes a "QUICK START" section with a three-step process: 1. Verify Device Eligibility, 2. Set up Meraki dashboard, and 3. Onboard your devices. A sidebar lists "Supported Catalyst hardware" including Catalyst 9200/L series, Catalyst 9300/L/X series, Catalyst 9500 series, and Running IOS-XE versions 17.3.x to 17.8. The document also mentions a full Onboarding Guide and the Meraki website.

Meraki

QUICK START

Getting Started with Cloud Monitoring for Catalyst

Follow this simple three-step process to verify switch compatibility, create a free Meraki dashboard account, and onboard your devices.



Start your journey to cloud management today.

- 1 Verify Device Eligibility**

To get started, you'll need your Catalyst device credentials (SSH Username and Password, Device IP addresses and ports) handy.
- 2 Set up Meraki dashboard**

Next, set up or [log into your Meraki dashboard account](#). Enable and grab your API key from Organization > Settings > API access.
- 3 Onboard your devices**

From Organization > Inventory, download and run the Catalyst Onboarding app.

That's it! After the onboarding process is complete, head to the Switches section of the dashboard to see topology, clients, traffic, and more.

Supported Catalyst hardware

Cloud Monitoring through the Meraki dashboard is supported on the following Catalyst hardware:

- Catalyst 9200/L series
- Catalyst 9300/L/X series
- Catalyst 9500 series
- Running IOS-XE versions 17.3.x to 17.8

Looking for more? Check out the full Onboarding Guide.

MERAKI.COM

Any questions?



The bridge to possible